

List of grand pianos



PETROF[®]
PIANOS SINCE 1864

www.petrof.com



Major European Manufacturer

Master series grand pianos

P 284 Mistral

a – 2840 mm • 111,81"
b – 1580 mm • 62,20"
Height: 1022 mm • 40,24"
Weight: 565 kg • 1245,59 lb
Rim inner: 12 beech, birch
Pinblock – material: beech plywood
type Multiplex, density 800–850 kg/m³



P 237 Monsoon

a – 2370 mm • 93,31"
b – 1565 mm • 61,61"
Height: 1022 mm • 40,24"
Weight: 465 kg • 1025,13 lb
Rim inner: 12 beech, birch
Pinblock – material: beech plywood
type Multiplex, density 800–850 kg/m³



P 210 Pasat

a – 2100 mm • 82,68"
b – 1525 mm • 60,04"
Height: 1006 mm • 39,60"
Weight: 410 kg • 902 lb
Rim inner: 12 beech, birch
Pinblock – material: beech plywood
type Multiplex, density 800–850 kg/m³



Standard series grand pianos

P 194 Storm

a – 1940 mm • 76,38"
b – 1525 mm • 60,04"
Height: 1006 mm • 39,60"
Weight: 342 kg • 752 lb
Rim inner: 12 beech, birch
Pinblock – material: beech plywood
type Multiplex, density 800–850 kg/m³



P IV

a – 1720 mm • 67,72"
b – 1525 mm • 60,04"
Height: 1006 mm • 39,60"
Weight: 309 kg • 680 lb
Rim inner: 9 beech, birch
Pinblock – material: beech plywood
type Multiplex, density 800–850 kg/m³



P V

a – 1580 mm • 62,20"
b – 1525 mm • 60,04"
Height: 1006 mm • 39,60"
Weight: 295 kg • 649 lb
Rim inner: 9 beech, birch
Pinblock – material: beech plywood
type Multiplex, density 800–850 kg/m³



New generation of PETROF grand pianos



P 284 Mistral



P 237 Monsoon



P 210 Pasat



P 194 Storm

Acoustic room



PETROF[®]
PIANOS SINCE 1864

Art Collection

P III Styl

a – 1930 mm • 75,98"
 b – 1525 mm • 69,04"
 Height: 1006 mm • 39,60"
 Weight: 342 kg • 752 lb
 Rim inner: 12 beech, birch
 Pinblock – material: beech plywood
 type Multiplex, density 800–850 kg/m³



P IV Demichippendale

a – 1720 mm • 67,72"
 b – 1525 mm • 60,04"
 Height: 1006 mm • 39,60"
 Weight: 309 kg • 680 lb
 Rim inner: 9 beech, birch
 Pinblock – material: beech plywood
 type Multiplex, density 800–850 kg/m³



P IV Klasik

a – 1720 mm • 67,72"
 b – 1525 mm • 60,04"
 Height: 1006 mm • 39,60"
 Weight: 309 kg • 680 lb
 Rim inner: 9 beech, birch
 Pinblock – material: beech plywood
 type Multiplex, density 800–850 kg/m³



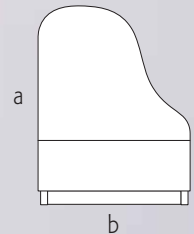
P IV Rokoko

a – 1720 mm • 67,72"
 b – 1525 mm • 60,04"
 Height: 1006 mm • 39,60"
 Weight: 309 kg • 680 lb
 Rim inner: 9 beech, birch
 Pinblock – material: beech plywood
 type Multiplex, density 800–850 kg/m³



P IV Chippendale

a – 1720 mm • 67,72"
 b – 1525 mm • 60,04"
 Height: 1006 mm • 39,60"
 Weight: 309 kg • 680 lb
 Rim inner: 9 beech, birch
 Pinblock – material: beech plywood
 type Multiplex, density 800–850 kg/m³



Standard series
 Per order

	Ivory 0051	White, matte 0002	White, high polish 0001	Black, high polish 0801	Walnut, satin 2257	Walnut, high polish 2251	Mahogany, satin 3287	Mahogany, high polish 3281
P 284 Mistral				○				
P 237 Monsoon				○				
P 210 Pasat				○				
P 194 Storm				○				
P IV	○		○	○		○		○
P V	○		○	○	○	○	○	○
P III Styl			○	○		○		
P IV Klasik			○	○		○		○
P IV Chippendale			○	○		○		○
P IV Demichippendale	○		○	○		○		○
P IV Rokoko		○						

www.petrof.com



Major European Manufacturer

Company Background

Petrof, spol. s r. o. is one of the leading European piano manufacturers. Its biggest export markets include the USA, Canada, France, Germany, Italy, Russia, Japan, Australia, but also Taiwan, Hong Kong and many others. The company has already produced over 600.000 instruments during more than 140 years of its history.

The own production has quickly developed over the past decades so that there has been a great increase in production. The traditional handicraft skill of highly qualified and creative specialists has remained up to now. It is necessary to carry out the assembly and important operations individually. The precise industrial production using up-to-date machinery is linked with the professional skill of the most experienced craftsmen who give the instrument special features and above all characteristic tender, romantic and noble sound.

Upright pianos

Are manufactured in 3 basic heights: (118 cm, 125 cm, 130 cm).

The product range has 13 models manufactured in 15 surface finishes.

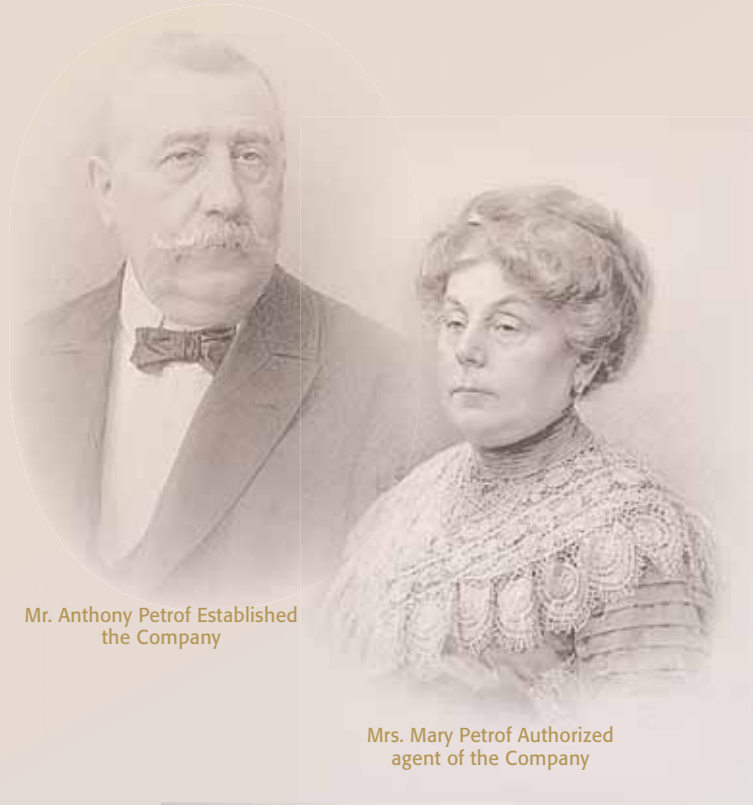
Grand pianos

Are manufactured in 7 basic lengths: (284 cm, 237 cm, 210 cm, 194 cm, 174 cm, 158 cm and 148 cm).

The product range has 12 models manufactured in 8 surface finishes.

Special features of grand pianos current construction are closely linked with the musical culture of Czech country. The musical instrument is a precious attribute craving for beauty above all and gives cultural experience to people. That is why the harmonic accord between acceptance and shape is the essential criterion for PETROF company.

The unique models prove that the PETROF company is capable and ready to satisfy wishes and requirements of highly demanding customers.



Mr. Anthony Petrof Established the Company

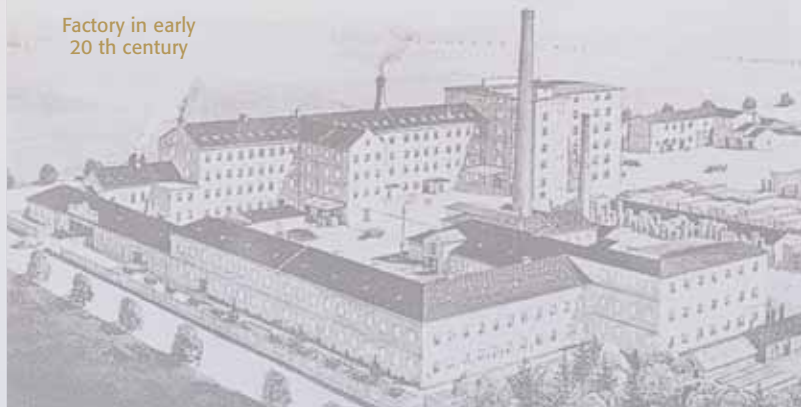
Mrs. Mary Petrof Authorized agent of the Company



Zuzana Ceralová Petrofová
5th generation President of the Company



Factory in early 20 th century



PETROF
PIANOS SINCE 1864

www.petrof.com



Major European Manufacturer